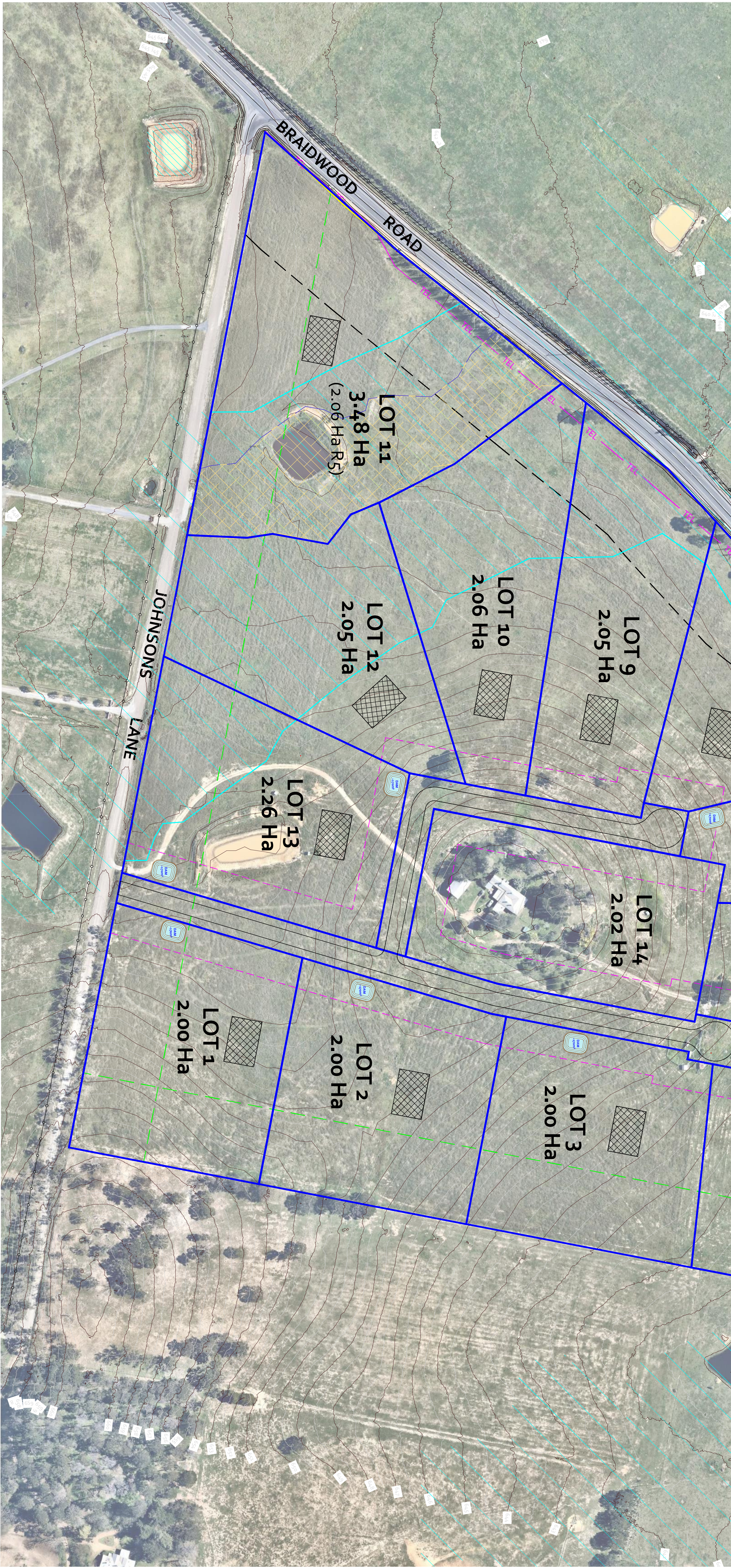


Lot #	Characteristics	North	South	East	West
1	Slope	D/S 0 - 5°	D/S 0 - 5°	U/S - Flat	U/S - Flat
	Distance to boundary	20	85	75	50
	BAL rating	BAL-19	BAL-LOW	BAL-12.5	BAL-12.5
2	Slope	D/S 0 - 5°	D/S 0 - 5°	U/S - Flat	U/S - Flat
	Distance to boundary	40	60	75	50
	BAL rating	BAL-12.5	BAL-LOW	BAL-LOW	BAL-12.5
3	Slope	D/S 0 - 5°	U/S - Flat	D/S 0 - 5°	U/S - Flat
	Distance to boundary	40	80	65	45
	BAL rating	BAL-12.5	BAL-LOW	BAL-LOW	BAL-12.5
4	Slope	D/S 0 - 5°	U/S - Flat	D/S 0 - 5°	D/S 0 - 5°
	Distance to boundary	>100	25	55	20
	BAL rating	BAL-LOW	BAL-LOW	BAL-12.5	BAL-12.5
5	Slope	>100	40	18	25
	Distance to boundary	BAL-LOW	BAL-12.5	BAL-19	BAL-12.5
	BAL rating	BAL-LOW	BAL-12.5	BAL-19	BAL-12.5
6	Slope	>100	65	20	25
	Distance to boundary	BAL rating	BAL-LOW	BAL-12.5	BAL-12.5
	BAL rating	BAL-LOW	U/S - Flat	D/S 0 - 5°	D/S 0 - 5°
7	Slope	50	50	20	25
	Distance to boundary	BAL-12.5	BAL-12.5	BAL-19	BAL-12.5
	BAL rating	D/S 0 - 5°	U/S - Flat	U/S - Flat	D/S 0 - 5°
8	Slope	40	25	30	90
	Distance to boundary	BAL rating	BAL-12.5	BAL-12.5	BAL-LOW
	BAL rating	D/S 0 - 5°	D/S 0 - 5°	U/S - Flat	D/S 0 - 5°
9	Slope	30	30	40	>100
	Distance to boundary	BAL-12.5	BAL-12.5	BAL-12.5	BAL-LOW
	BAL rating	D/S 0 - 5°	D/S 0 - 5°	U/S - Flat	D/S 0 - 5°
10	Slope	20	20	45	>100
	Distance to boundary	BAL rating	BAL-19	BAL-12.5	BAL-LOW
	BAL rating	D/S 0 - 5°	U/S - Flat	U/S - Flat	D/S 0 - 5°
11	Slope	>100	50	>100	65
	Distance to boundary	BAL-LOW	BAL-12.5	BAL-LOW	BAL-LOW
	BAL rating	D/S 0 - 5°	D/S 0 - 5°	U/S - Flat	D/S 0 - 5°
12	Slope	20	50	17	30
	Distance to boundary	BAL rating	BAL-19	BAL-12.5	BAL-12.5
	BAL rating	D/S 0 - 5°	U/S - Flat	D/S 0 - 5°	D/S 0 - 5°
13	Slope	30	>100	45	45
	Distance to boundary	BAL-12.5	BAL-LOW	BAL-12.5	BAL-12.5
	BAL rating	D/S 0 - 5°	D/S 5° - 10°	D/S 0 - 5°	D/S 5° - 10°
14*	Slope	>100	40	40	35
	Distance to boundary	BAL rating	BAL-LOW	BAL-12.5	BAL-12.5

\* = Heritage homestead



PROJECT TITLE LAND REZONING APPLICATION	
DRAWING TITLE STRATEGIC BUSH FIRE STUDY SITE PLAN	
TITLE PARTICULARS LOTS 61, 64 & 71-77 Dp96/08 and LOT 60 Dp100/0981	
DRAWING NUMBER 00309321	SHEET NUMBER 1 of 1
DRAWING DATE Feb. 2024	DATE Feb. 2024
DRAWING SCALE 1:1,500	SCALE A1
DRAWING REFERENCE NUMBER 00309321-01E	
APPROVED BY A	COUNCIL SUBMISSION
DATE 04/02/2024	

This drawing and the ideas contained herein are protected by copyright. Unauthorised distribution, reproduction or use as part of a submission for development purposes is a breach of copyright. The client agrees to indemnify and hold the drafter harmless from any claims, damages or costs incurred by the drafter in connection with the preparation, production or distribution of this drawing. The client agrees to pay all invoices owing to the drafter within 14 days of the date of issue. The drawings are conceptual and are not intended to be absolute and therefore may be slightly varied in reality. Internal contours and features reproduced with consent from the detailed site survey by the drafter. The drafter is not responsible for any errors or omissions. External contour data produced from LIDAR resources accessed from Geoscience Australia.

LINE TYPES & SYMBOL LEGEND USED IN THE PLANS

- OPTICAL FIBRE CABLE - APPROXIMATE LOCATION
- OVERHEAD POWER TRANSMISSION LINES
- 80 METRE SETBACK FROM GRAZING LAND - GMCDCP S5.9.1.1
- 50 METRE BOUNDARY SETBACK FOR BUSH FIRE PROTECTION
- 20 METRE BUILDING SETBACK FROM INTERNAL ROADWAYS
- NOMINATED DWELLING ENVELOPE - 600m<sup>2</sup>
- EFFLUENT DISPOSAL AREA - 100m<sup>2</sup>
- NEW FARM DAMS - VARIABLE SIZES

PEACH COLOURED DIAGONAL HATCHING WITHIN LOT 11 REPRESENTS 'C2' ZONED LAND AND IS EQUAL TO THE 'FLOOD PLANNING AREA'. ALL OTHER LAND WITHIN THE PROPOSED LOTS TO BE ZONED 'R5'.

THE PROBABLE MAXIMUM FLOOD (PMF) AND FLOOD PLANNING AREAS (FPA) EXTENTS USED IN THE PREPARATION OF THIS PLAN ARE BASED ON THE RESULTS OF THE FLOOD MODELLING AND ASSESSMENT UNDERTAKEN BY GRC HYDRO (DEC. 2023)

